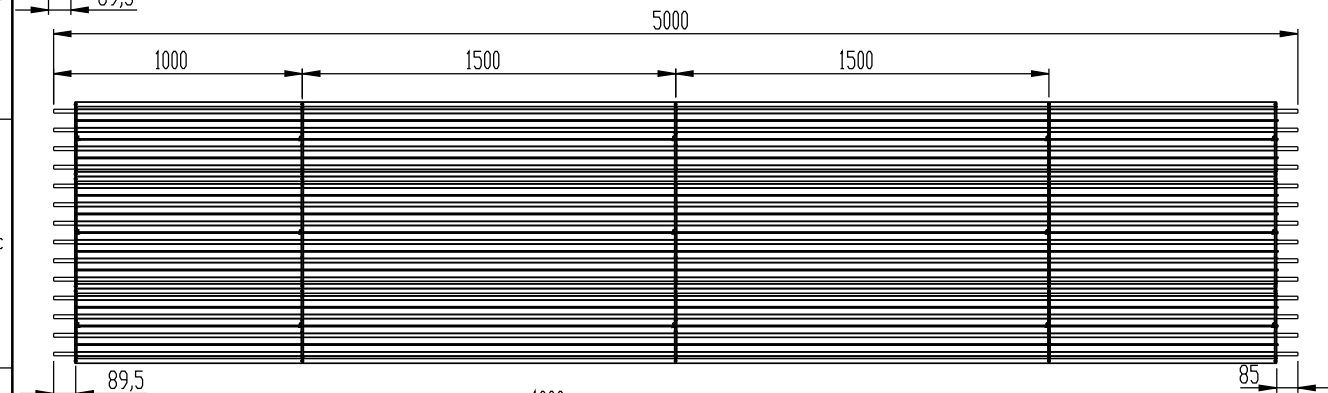
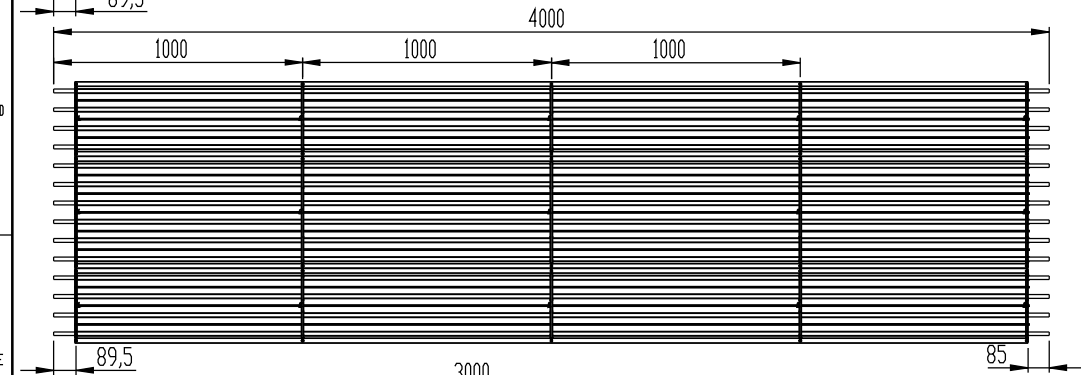


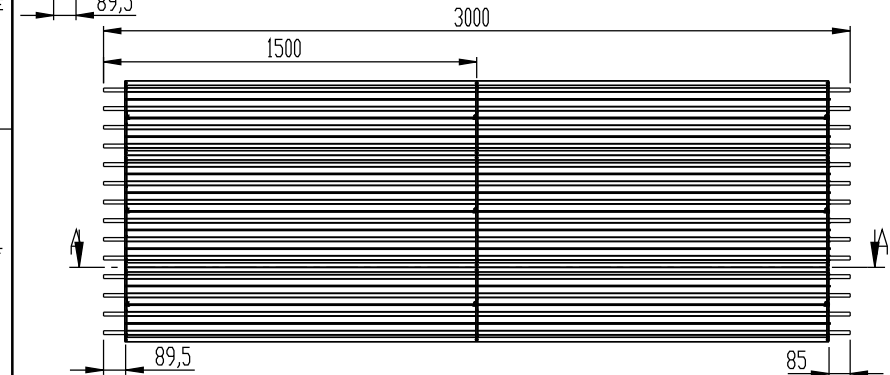
6	1	BAR-ZFP-Hang-L1047-W39,3-T1,00-0002-END	40019573	10000111703	DC01+ZE25/25 (1.0330) - elektrolytisch verzinkt
5	45	SCR-ZFP-4,2x13	40019457	10000112278	Material (nicht festgelegt)
4	14	Rohr 15x1x170lg.fr Kopfstck	-	10000110117	1.0034 / E195
3	4	BAR-ZFP-Hang-L1045-W39,3-T1,00-0002	40019303	10000110213	DC01+ZE25/25 (1.0330) - elektrolytisch verzinkt
2	2	SHM-ZIP-HSG-L5830-W300-9016	40018883	10000109538	DC01 / 1.0330
1	1	SHM-ZIP-HSG-L5830-W450-9016	40018888	10000109513	see technical delivery terms
POS	QTY	DESCRIPTION	MATNR	DOCUMENTNR	MATERIAL



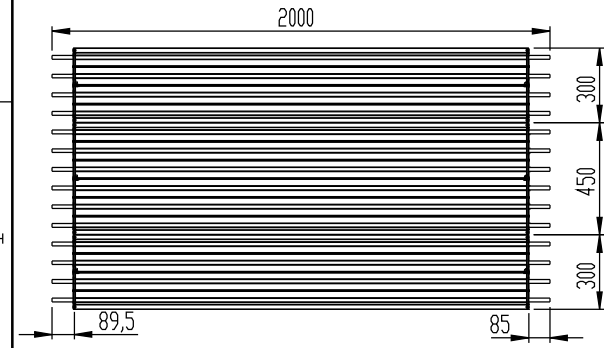
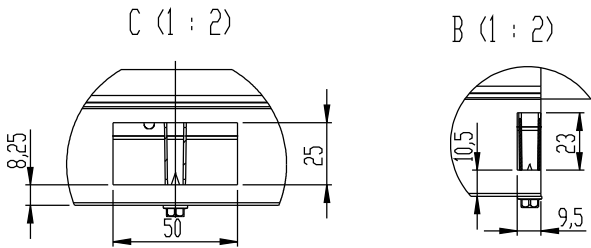
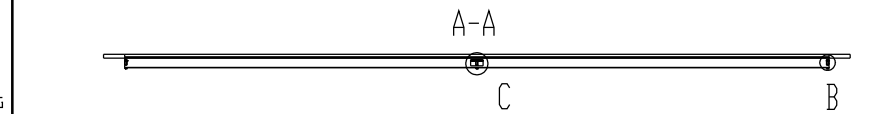
6	1	BAR-ZFP-Hang-L1047-W39,3-T1,00-0002-END	40019573	10000111703	DC01+ZE25/25 (1.0330) - elektrolytisch verzinkt
5	45	SCR-ZFP-4,2x13	40019457	10000112278	Material (nicht festgelegt)
4	14	Rohr 15x1x170lg.fr Kopfstck	-	10000110117	1.0034 / E195
3	4	BAR-ZFP-Hang-L1045-W39,3-T1,00-0002	40019303	10000110213	DC01+ZE25/25 (1.0330) - elektrolytisch verzinkt
2	2	SHM-ZIP-HSG-L4830-W300-9016	40018882	10000109538	DC01 / 1.0330
1	1	SHM-ZIP-HSG-L4830-W450-9016	40018887	10000109513	DC01 (1.0330) St.12
POS	QTY	DESCRIPTION	MATNR	DOCUMENTNR	MATERIAL



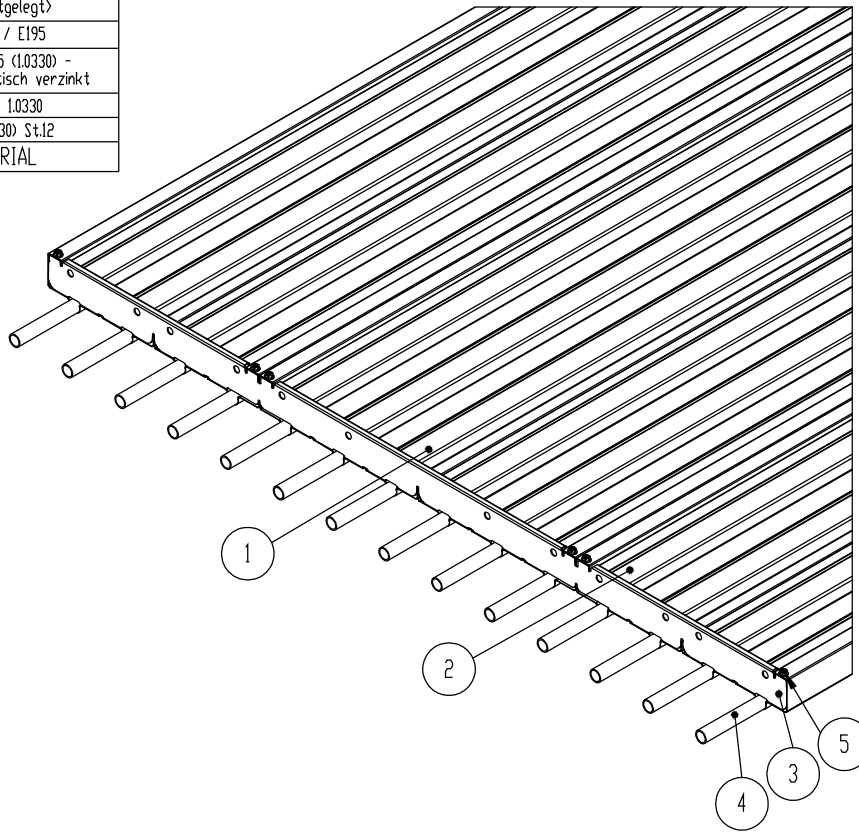
6	1	BAR-ZFP-Hang-L1047-W39,3-T1,00-0002-END	40019573	10000111703	DC01+ZE25/25 (1.0330) - elektrolytisch verzinkt
5	45	SCR-ZFP-4,2x13	40019457	10000112278	Material (nicht festgelegt)
4	14	Rohr 15x1x170lg.fr Kopfstck	-	10000110117	1.0034 / E195
3	4	BAR-ZFP-Hang-L1045-W39,3-T1,00-0002	40019303	10000110213	DC01+ZE25/25 (1.0330) - elektrolytisch verzinkt
2	2	SHM-ZIP-HSG-L3830-W300-9016	40018881	10000109538	DC01 / 1.0330
1	1	SHM-ZIP-HSG-L3830-W450-9016	40018886	10000109513	DC01 (1.0330) St.12
POS	QTY	DESCRIPTION	MATNR	DOCUMENTNR	MATERIAL



6	1	BAR-ZFP-Hang-L1047-W39,3-T1,00-0002-END	40019573	10000111703	DC01+ZE25/25 (1.0330) - elektrolytisch verzinkt
5	27	SCR-ZFP-4,2x13	40019457	10000112278	Material (nicht festgelegt)
4	14	Rohr 15x1x170lg.fr Kopfstck	-	10000110117	1.0034 / E195
3	2	BAR-ZFP-Hang-L1045-W39,3-T1,00-0002	40019303	10000110213	DC01+ZE25/25 (1.0330) - elektrolytisch verzinkt
2	2	SHM-ZIP-HSG-L2830-W300-9016	40018880	10000109538	DC01 / 1.0330
1	1	SHM-ZIP-HSG-L2830-W450-9016	40018885	10000109513	DC01 (1.0330) St.12
POS	QTY	DESCRIPTION	MATNR	DOCUMENTNR	MATERIAL



6	1	BAR-ZFP-Hang-L1047-W39,3-T1,00-0002-END	40019573	10000111703	DC01+ZE25/25 (1.0330) - elektrolytisch verzinkt
5	18	SCR-ZFP-4,2x13	40019457	10000112278	Material (nicht festgelegt)
4	14	Rohr 15x1x170lg.fr Kopfstck	-	10000110117	1.0034 / E195
3	1	BAR-ZFP-Hang-L1045-W39,3-T1,00-0002	40019303	10000110213	DC01+ZE25/25 (1.0330) - elektrolytisch verzinkt
2	2	SHM-ZIP-HSG-L1830-W300-9016	40018859	10000109538	see technical delivery terms
1	1	SHM-ZIP-HSG-L1830-W450-9016	40018884	10000109513	DC01 (1.0330) St.12
POS	QTY	DESCRIPTION	MATNR	DOCUMENTNR	MATERIAL



zahn	ECN	Dlner	Tolerances according to	Dimensional tolerances	Date drawn	Drawn by
Article number	Status	PLA	ISO 1101 / ISO 8015	ISO 2768 - mK	27.11.2020	psc07
-	20	ISO 1302/2	Surface condition acc. to	Surface treatment	Date released	Rel. by
Material	Description	1:20	1 of 1	Date created	Language	Version
10000110265	AA					